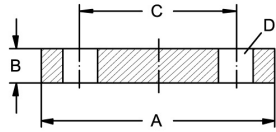


## Welding neck flanges EN 1092-1

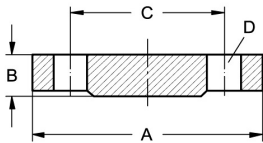
Art.No EUR Art.No EUR

### Blind flange DIN 2527, form B, ND 6



DN	A	B	C	D		AISI316L-1.4435	AISI316Ti-1.4571
10	75	12	50	4xM10x40		466930-B Enquiry	463630-B Enquiry
15	80	12	55	4xM10x40		466931-B Enquiry	463631-B Enquiry
20	90	14	65	4xM10x50		466932-B Enquiry	463632-B Enquiry
25	100	14	75	4xM10x50		466933-B Enquiry	463633-B Enquiry
32	120	14	90	4xM12x55		466934-B Enquiry	463634-B Enquiry
40	130	14	100	4xM12x55		466935-B Enquiry	463635-B Enquiry
50	140	14	110	4xM12x55		466936-B Enquiry	463636-B Enquiry
65	160	14	130	4xM12x55		466937-B Enquiry	463637-B Enquiry
80	190	16	150	4xM16x65		466938-B Enquiry	463638-B Enquiry
100	210	16	170	4xM16x65		466939-B Enquiry	463639-B Enquiry
125	240	18	200	8xM16x65		466941-B Enquiry	463641-B Enquiry
150	265	18	225	8xM16x65		466942-B Enquiry	463642-B Enquiry
200	320	20	280	8xM16x75		466944-B Enquiry	463644-B Enquiry
250	375	22	335	12xM16x75		466946-B Enquiry	463646-B Enquiry
300	440	22	395	12xM20x80		466948-B Enquiry	463648-B Enquiry

### Blind flange DIN 2527, form C, ND 6



DN	A	B	C	D		AISI316L-1.4435	AISI316Ti-1.4571
10	75	12	50	4xM10x40		466930-C Enquiry	463630-C Enquiry
15	80	12	55	4xM10x40		466931-C Enquiry	463631-C Enquiry
20	90	14	65	4xM10x50		466932-C Enquiry	463632-C Enquiry
25	100	14	75	4xM10x50		466933-C Enquiry	463633-C Enquiry
32	120	14	90	4xM12x55		466934-C Enquiry	463634-C Enquiry
40	130	14	100	4xM12x55		466935-C Enquiry	463635-C Enquiry
50	140	14	110	4xM12x55		466936-C Enquiry	463636-C Enquiry
65	160	14	130	4xM12x55		466937-C Enquiry	463637-C Enquiry
80	190	16	150	4xM16x65		466938-C Enquiry	463638-C Enquiry
100	210	16	170	4xM16x65		466939-C Enquiry	463639-C Enquiry
125	240	18	200	8xM16x65		466941-C Enquiry	463641-C Enquiry
150	265	18	225	8xM16x65		466942-C Enquiry	463642-C Enquiry
200	320	20	280	8xM16x75		466944-C Enquiry	463644-C Enquiry
250	375	22	335	12xM16x75		466946-C Enquiry	463646-C Enquiry
300	440	22	395	12xM20x80		466948-C Enquiry	463648-C Enquiry